



# UROLIFT<sup>®</sup>

BPH Relief. In Sight.<sup>™</sup>

## Before and After Photos of the UroLift<sup>®</sup> Procedure

Most common adverse events reported include hematuria, dysuria, micturition urgency, pelvic pain, and urge incontinence. Most symptoms were mild to moderate in severity and resolved within two to four weeks after the procedure. Individual results may vary.

**neotract<sup>®</sup>**

# UroLift® System Procedure

# Before & After



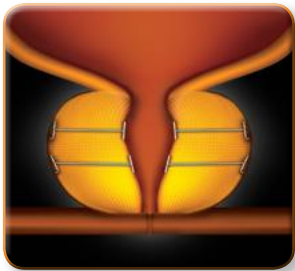
## Step 1

The UroLift® Delivery Device is placed through the obstructed urethra to access the enlarged prostate.



## Step 2

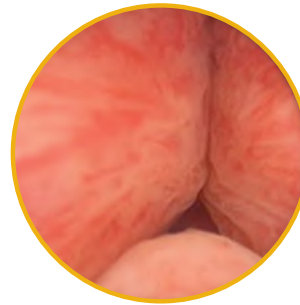
Small UroLift Implants are permanently placed to lift or hold the enlarged prostate tissue out of the way and increase the opening of the urethra. The permanent Implants are delivered through a small needle that comes out of the UroLift Delivery Device and into the prostate.



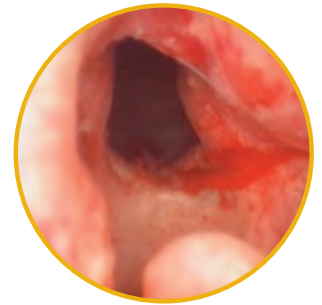
## Step 3

The UroLift Delivery Device is removed, leaving an open urethra designed to provide symptom relief.

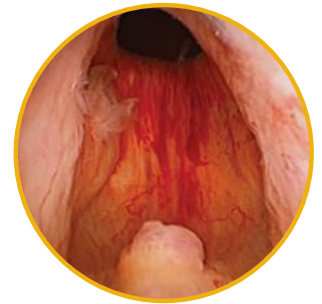
### Pre-procedure



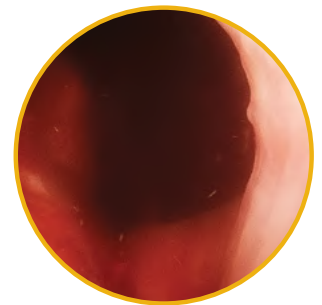
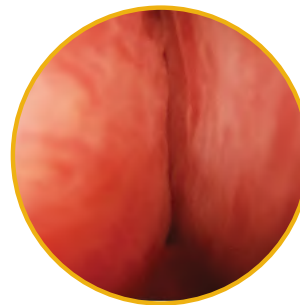
### Post-procedure



*(Images courtesy of Dr. Peter Chin, Wollongong, NSW, Australia)*



*(Images courtesy of Dr. Edward Karpman, Mountain View, CA)*



*(Images courtesy of Dr. Justin Chee, Melbourne, VIC, Australia)*